

Resilient Ways Forward

Transportation planning for our changing climate



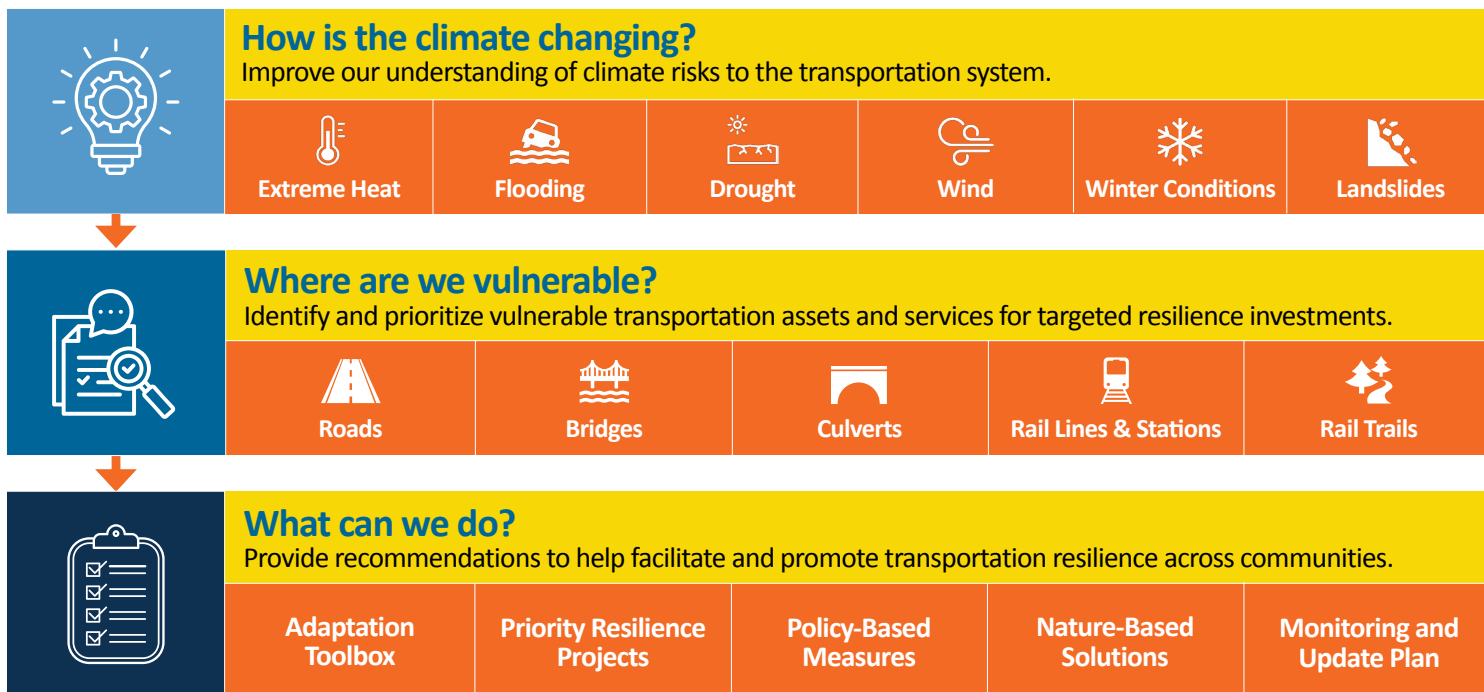
What can we do?

Step 3: Recommendations

The Dutchess County Transportation Council (DCTC) prepared a Climate Vulnerability Assessment, titled **Resilient Ways Forward**, that identifies where our transportation system is most vulnerable to the impacts of climate change.

To further our long-range vision of creating a safer, more reliable, resilient, and equitable transportation system, we developed a **suite of resilience recommendations** based on our priority climate vulnerabilities. These recommendations are designed for decision-makers and partner agencies to evaluate and implement, with the goal of making our transportation infrastructure and services more resilient to our changing climate.

Key Questions and Objectives



Resilience Recommendations

ADAPTATION TOOLBOX

A suite of adaptation measures for infrastructure owners and service providers (e.g., highway departments and public transit agencies) to consider applying at vulnerable asset locations.

RESILIENCE PROJECTS

Resilience projects that partner agencies may pursue to improve vulnerable assets. These include New York State Department of Transportation projects to reduce flood risk, and Dutchess County Department of Public Works projects to replace scour-critical bridges.

POLICY-BASED MEASURES

A set of measures for local jurisdictions and partner agencies to consider and implement to improve system-wide resilience.

Transportation Resilience Improvement Plan: [Read the full plan.](#)

www.ResilientWaysForward.com






Resilient Ways Forward





Transportation planning for our changing climate

Resilience Recommendations

The **Adaptation Toolbox** includes more than 40 measures to increase the resilience of our transportation system to climate hazards (flooding, landslide, extreme heat, wind, and winter conditions). Local- and county-level **policies and initiatives** are essential to facilitate and encourage the broader implementation of these resilience measures, so we also developed a series of **policy-based measures** to improve system-wide resilience.

See Our Online Adaptation **Toolbox** for details about each resilience measure. [Launch the Toolbox](#)

Climate Hazard	Resilience Measures
 Flooding	<ul style="list-style-type: none">• Infrastructure enhancements• Nature-based solutions• Stream and waterway management• Technological solutions and strategic planning
 Extreme Heat	<ul style="list-style-type: none">• Public awareness and education• Cooling infrastructure
 Winter Conditions	<ul style="list-style-type: none">• Roadway maintenance• Public transportation and services
 Landslide	<ul style="list-style-type: none">• Infrastructure protection• Slope management• Technological and monitoring solutions
 Wind	<ul style="list-style-type: none">• Vegetation management• Monitoring and reporting

Policy-based Measures	Resilience Measures
	<ul style="list-style-type: none">• Emergency planning• Community outreach• Local planning• Capacity-building and collaboration
Transportation Asset	Resilience Project Ideas
 Roads	<ul style="list-style-type: none">• New York State Department of Transportation road, bridge, and culvert projects• Dutchess County Department of Public Works bridge projects
 Bridges	
 Culverts	

Future Project Ideas: To support agencies applying for federal **PROTECT** (Promoting Resilience Operations for Transformative, Efficient, and Cost-Saving Transportation) grants, we will update our priority project list as we continue to identify ways to address resilience. We encourage our partners to submit project ideas using our [online form](#).

Transportation Resilience Improvement Plan: [Read the full plan.](#)

www.ResilientWaysForward.com

Resilient Ways Forward

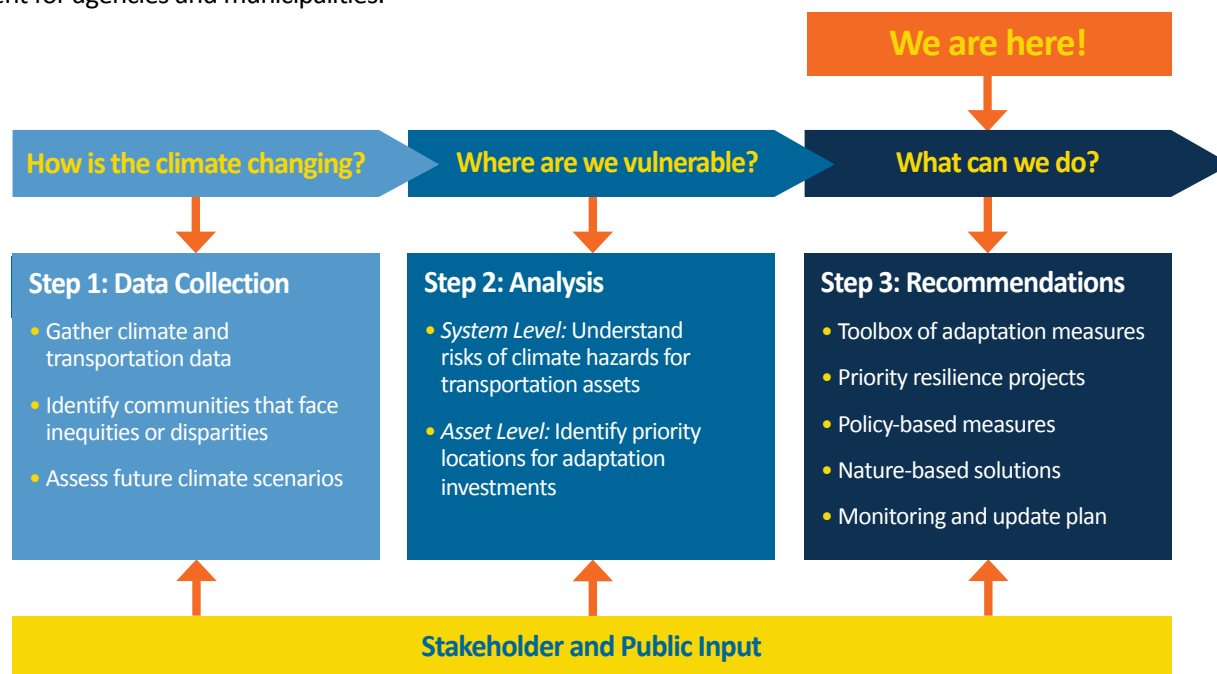
Transportation planning for our changing climate

Transportation Resilience Improvement Plan

The **Resilient Ways Forward Transportation Resilience Improvement Plan (TRIP)** summarizes our study findings and outlines a path forward with strategies, project concepts, and recommendations for making today's transportation system more resilient to our changing climate.

Next Steps

We look forward to working with partner agencies and the community to build a more resilient transportation system. We will play a key role in facilitating collaboration between partners and stakeholders; integrating resilience and future climate data into current and future planning; programming federal funds for eligible projects; and encouraging training, education, and professional development for agencies and municipalities.



Resources

- Climate Change Summary: [Read the report](#)
- Climate Change Fact Sheet: [Read the fact sheet](#)
- Climate Vulnerability Assessment Phase 1: [Read the report](#)
- Climate Vulnerability Assessment Phase 2: [Read the report](#)
- Climate Vulnerability Assessment Fact Sheet: [Read the fact sheet](#)
- Transportation Resilience Improvement Plan: [Read the plan](#)

Stay Informed

Visit ResilientWaysForward.com for more information.

dctc



www.ResilientWaysForward.com
dctc@dutchessny.gov



Dutchess County Transportation Council
85 Civic Center Plaza, Suite 107
Poughkeepsie, NY 12601



(845) 486-3600