

# **Moving Dutchess Forward**

*Planning for our transportation future.*



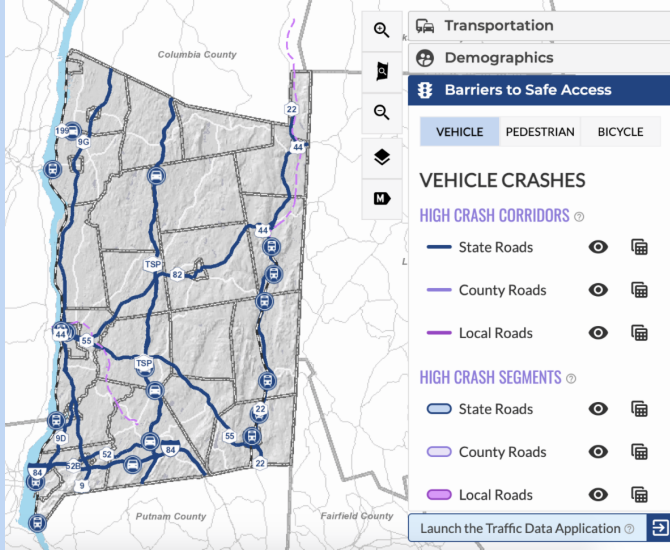
## **"Barriers to Safe Access" Now Live!**

We hear about crashes so often that they seem inevitable. But crashes are not inevitable - they are often predictable and almost always preventable.

Understanding the patterns behind when crashes happen and why they happen can help us prevent them.

Check out the *Moving Dutchess Forward* website to learn more about crash patterns in Dutchess County and what can be done to improve safety.

**Click [HERE](#) to learn about Barriers to Safe Access**



## Explore the Barriers to Safe Access Map

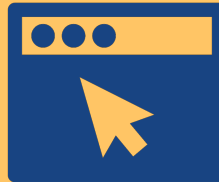
See high-crash locations for vehicle, pedestrian and bicycle crashes in Dutchess County.

[Visit Map Viewer](#)

## Learn More About Our Plan



[Watch the video](#)



[Visit the website](#)



[Take the survey in English or Spanish](#)  
- closing 1/31 -



Dutchess County Transportation Council | 85 Civic Center Plaza, Suite 107, Poughkeepsie, NY 12601  
dctc@dutchessny.gov

[Unsubscribe {recipient's email}](#).

[Update Profile](#) | [About our service provider](#)

Sent by skitzman@fhiplan.com powered by



Try email marketing for free today!